

DEPTH IN THE BLOCK

Market Theater Spring 2002

This project houses multiple programs: market and theater. The initial explorations in the project focused on the tension between depth and relief. The urban context presents planes of built material that run uninterrupted along street frontages. This building both attempts to continue this tradition and break with decorum by showing deep views into the depth of the block. Three types of views in and around the building were critical to its compositional development: the view from stage to market stall, from stall to stage, and from street to stage.

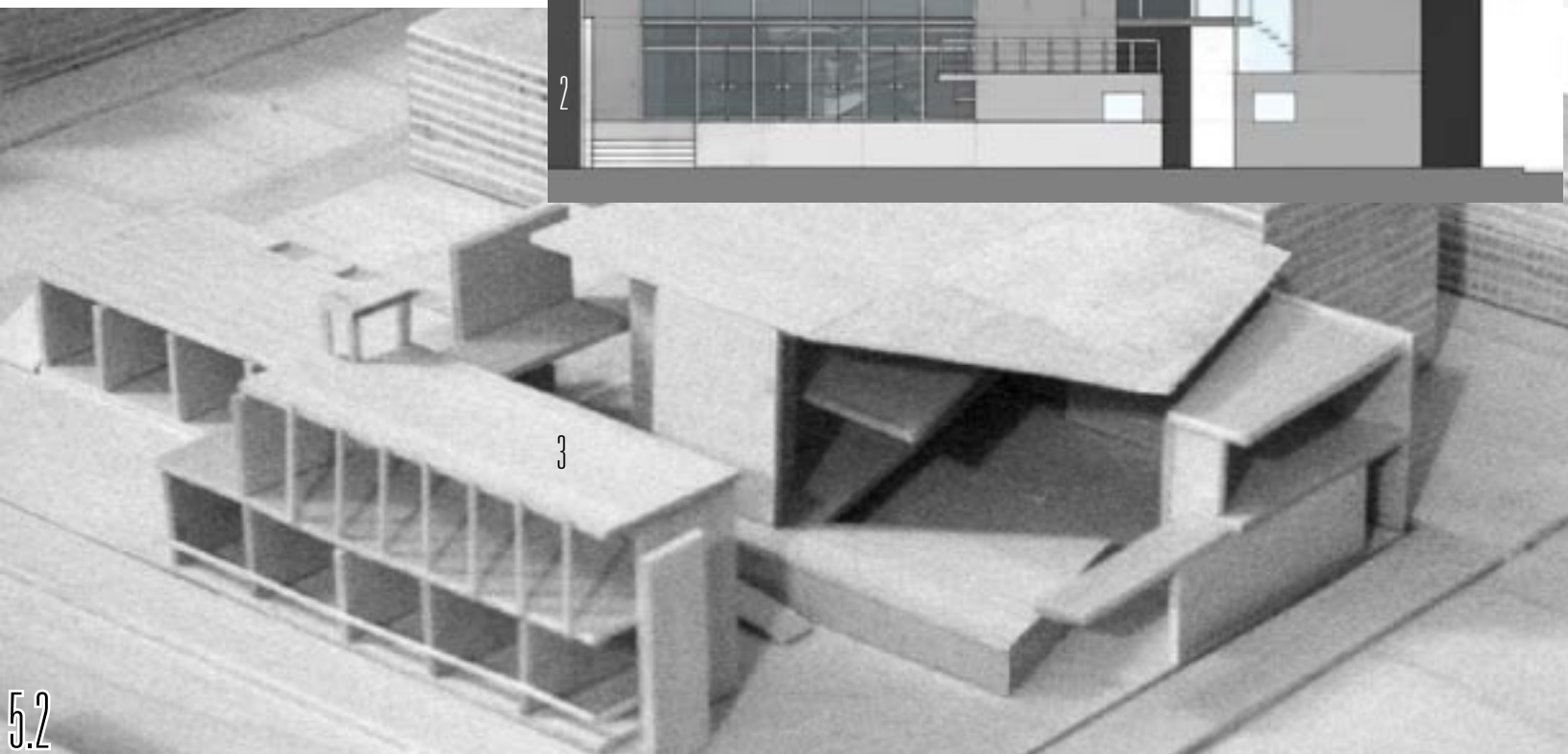
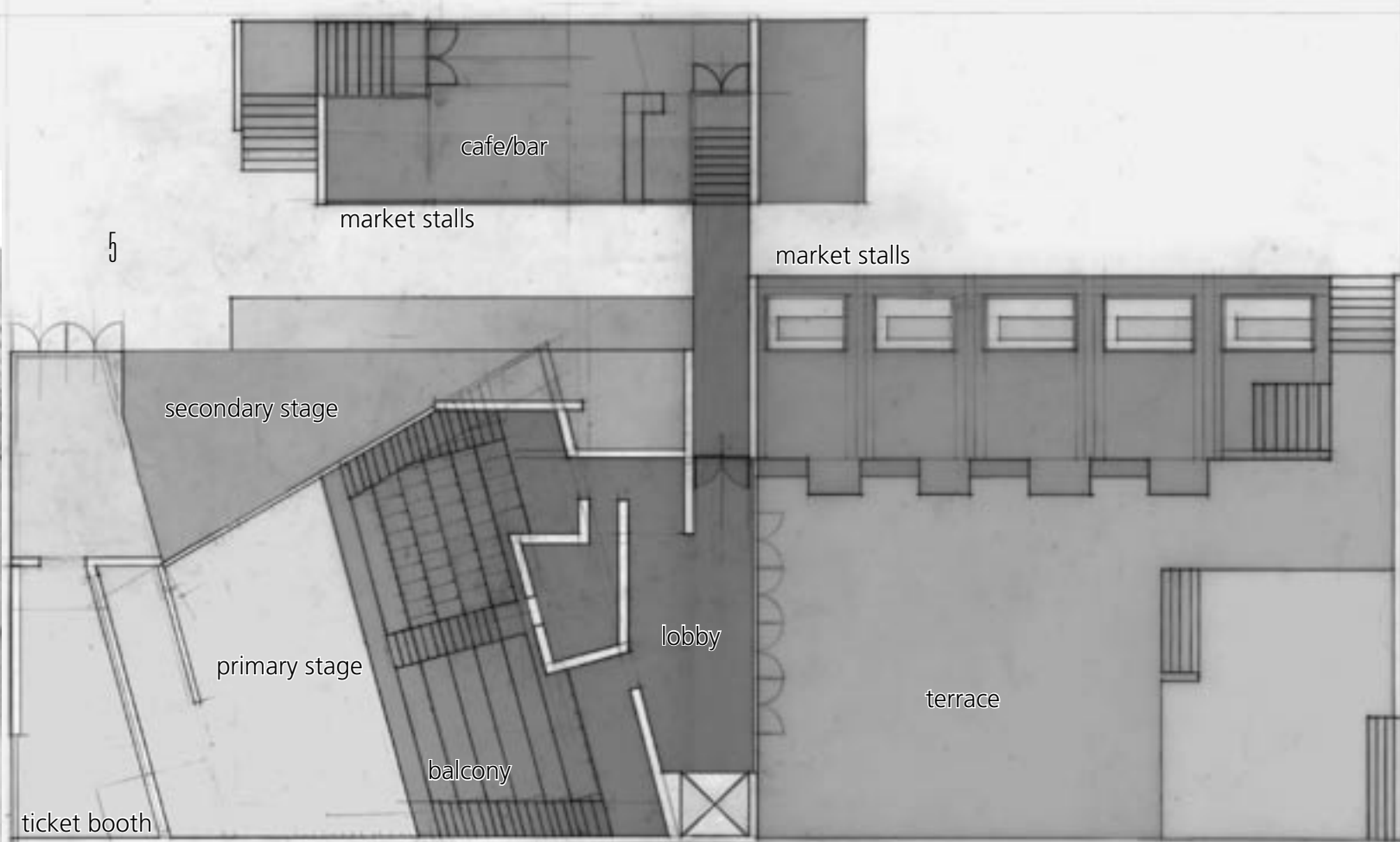
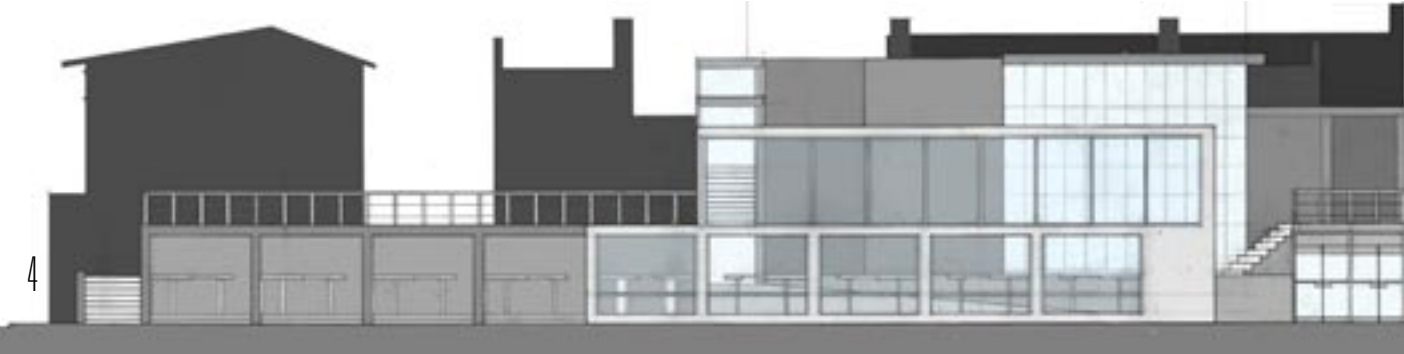
1. Site Plan
- A. View from Market Stall to Stage
- B. View From Street
- C. View from Stage to Market Stall
(Views' Positions Noted on Site Plan)



DEPTH IN THE BLOCK

Market Theater Spring 2002

1. South Street Elevation
2. Naudain Street Elevation
3. Site Model
4. 23rd Street Elevation
5. Plan



5.2