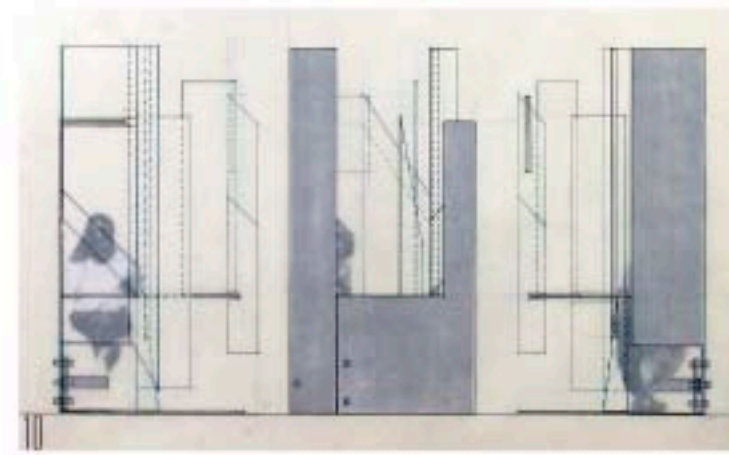
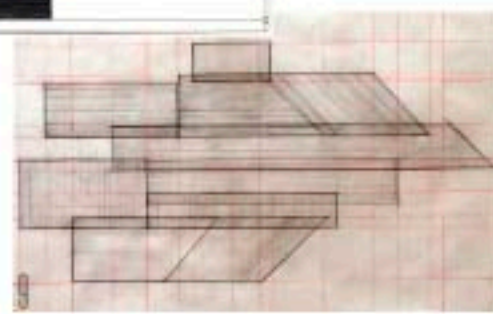
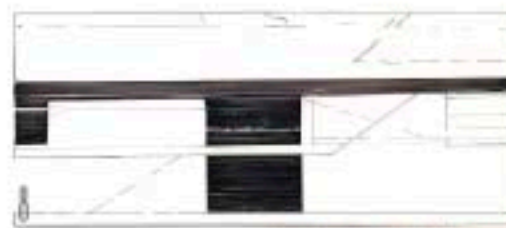
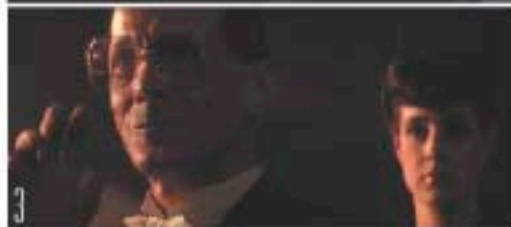
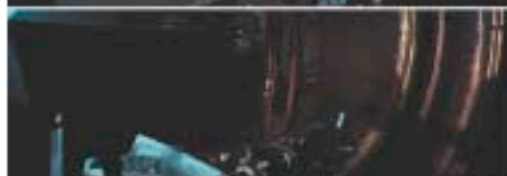
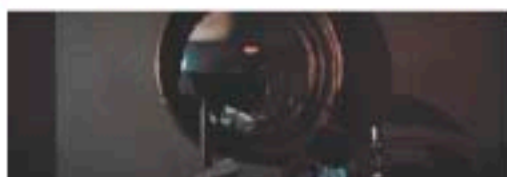
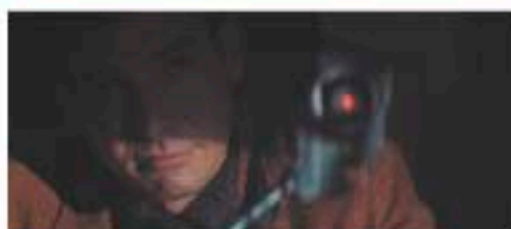
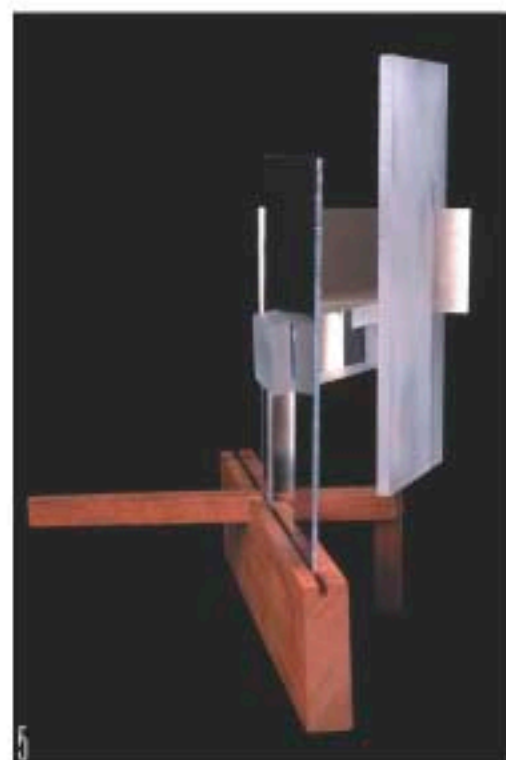
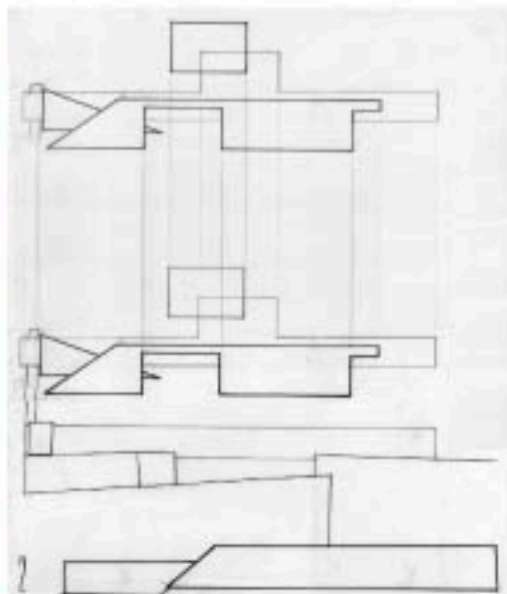
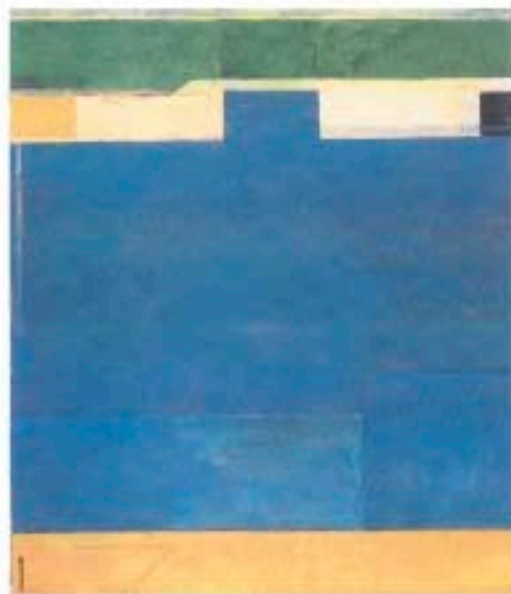


MOVEMENT AND MAGNIFICATION

Window of Exchange Fall 2001

Richard Diebenkorn's "Ocean Park" paintings and a chosen narrative are points of departure in this project to design a window of exchange between two individuals. The painting seems to indicate open and closed positions. The film *Blade Runner* and its literary antecedent *Do Robots Dream Electric Sheep?* present magnification as both a process and metaphor for understanding the world. As the narrative unfolds, the reliability of magnification breaks down. Early studies for this project explore refraction and magnification as both constructive and disruptive acts.

- 1. Richard Diebenkorn, *Untitled*.
- 2. Analytical Drawing
- 3. Ridley Scott, *Blade Runner*, Voigt-Kampff Lie Detector Test
- 4. Ridley Scott, *Blade Runner*, Image Magnifier
- 5-7. Material Studies
- 8-9. Analytical Drawings
- 10. Window of Exchange, sections and elevation



MOVEMENT AND MAGNIFICATION

Window of Exchange Fall 2001

The final project is a translation of the Voigt-Kampff Lie Detector Test described in the book and film. In the test, the subject's emotional reactions to a series of questions are measured by monitoring minute reactions in the retina of the subject. As the story progresses, the validity of the test becomes suspect. A series of prisms that surround the subject represent the test. As the subject is moved in front of the prisms, the viewer perceives the subject as fractured and distorted.

1. Window of Exchange, plan and section
2. Window of Exchange, model and detail images

